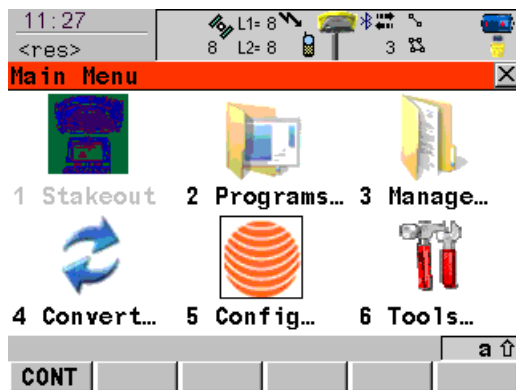


## GeoMax ZGP800 – GSM Dialup

The "Network" license key is required to allow the ZGP800 user GSM dial-up with version 8.80.

### Startup

Before configuration of GSM set the radio port to serial (not Bluetooth)



From "Main Menu" open "Configuration" (5)

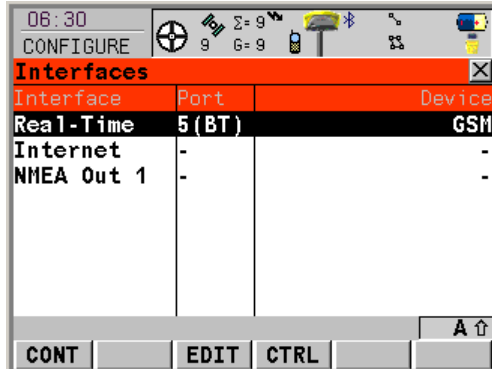


Select "GSM Rover"

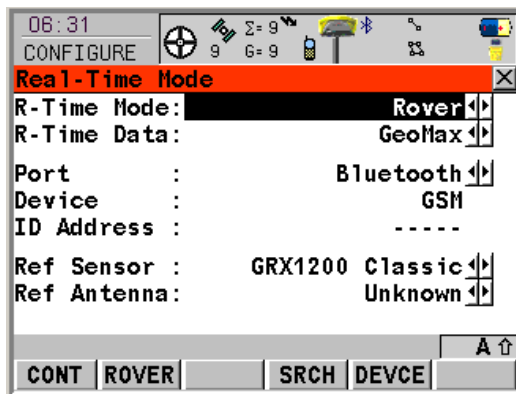
Select "Cont"

## Mobile Phone Connection

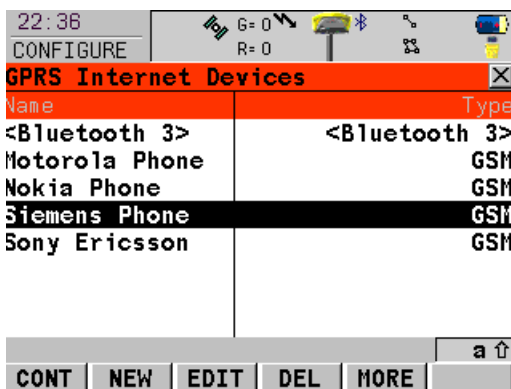
Setting up the mobile phone connection



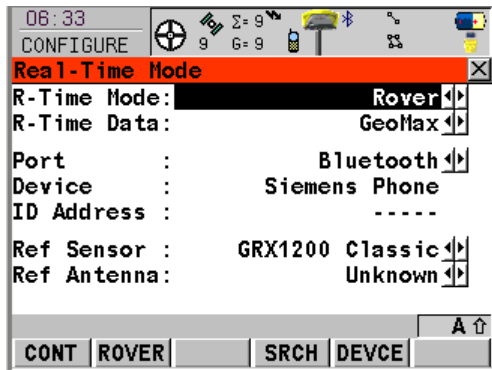
Select "Real-Time"  
Select "Edit" (F3)



Port: Bluetooth  
Select "Device" (F5)

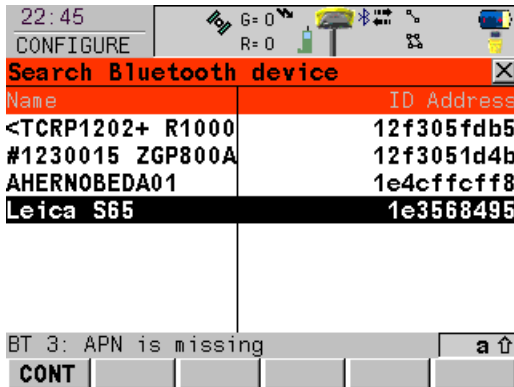


Select your phone  
"Edit" allows you to view the settings and AT Commands  
These settings should not need to be changed  
Select "Cont" (F1) once you have selected your phone



Select "Search" (F4)

Note that the phone must be configured to Bluetooth mode. Some phones (e.g. Motorola E1000) require "Find me" to be activated.



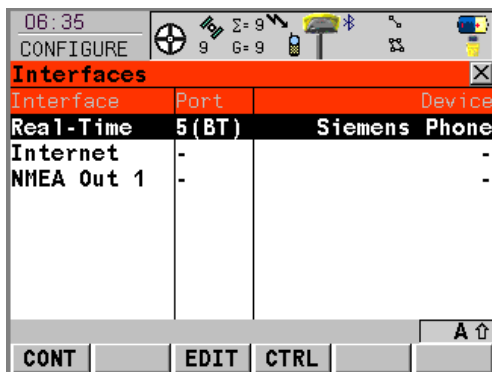
Select the correct Bluetooth correction

When Bluetooth codes are requested input "0000" in both the controller and the phone.

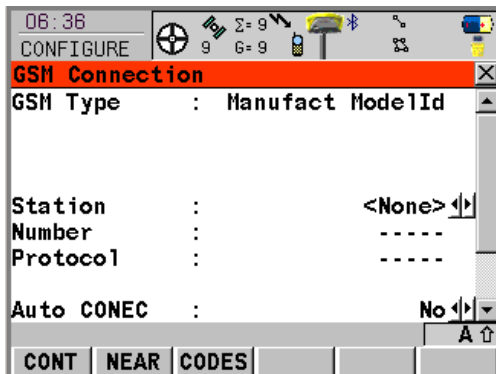
Select "Cont" (F1)

### Dial-Up Connection

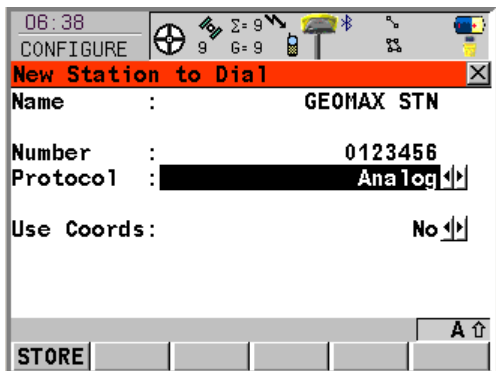
*Setting up the mobile phone to call the correct number...*



Select "Control" (F4)



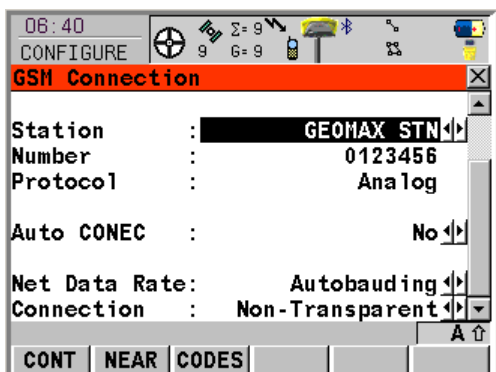
Enter the Station. To create a new station you will need to highlight Station & Press "Enter".



The protocol used depends on the local network or number you are dialing. Your RTK Network can provide you with this information.

Store the station by press F1 STORE. Select the station by pressing F1 CONT.

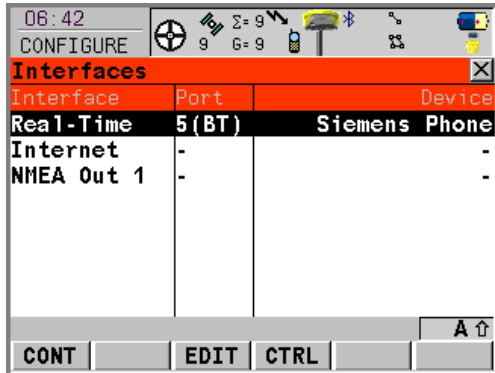
In the GSM Connection...



Use Auto-Binding & Non-Transparent modes for the connection and net data rate.

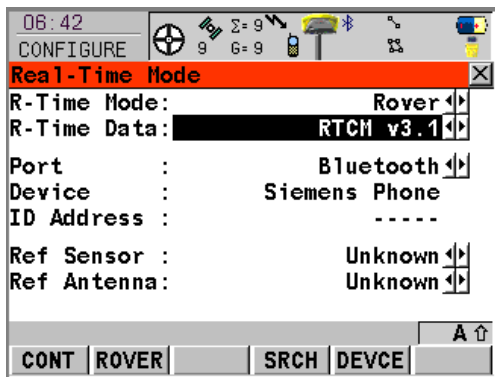
## Real-Time Format

Setting the real-time port to the correct format



Select "Real-Time"

Select "Edit"



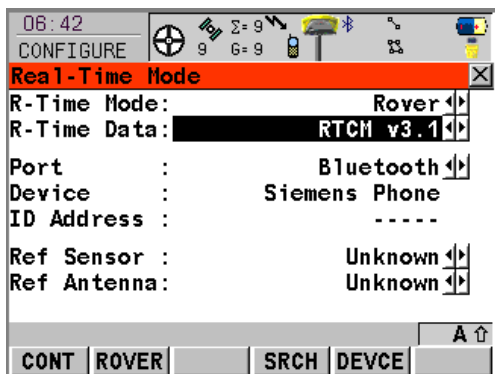
Select the required format of real-time data. E.g. R-Time Data: RTCM v3.1

Select the required network port. E.g. Port: Bluetooth

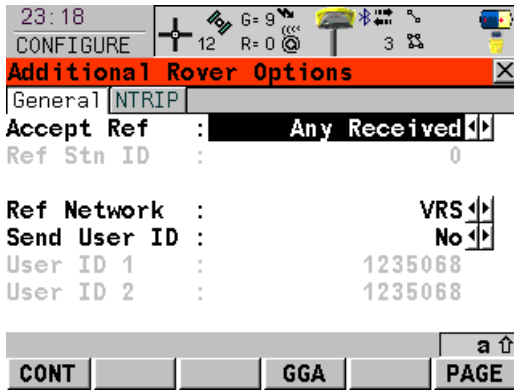
Select "Cont" (F1)

## Real-Time correction

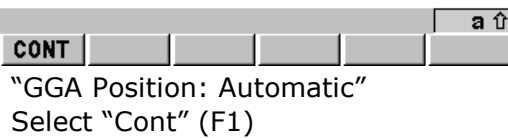
Connecting to the required RTK reference station data



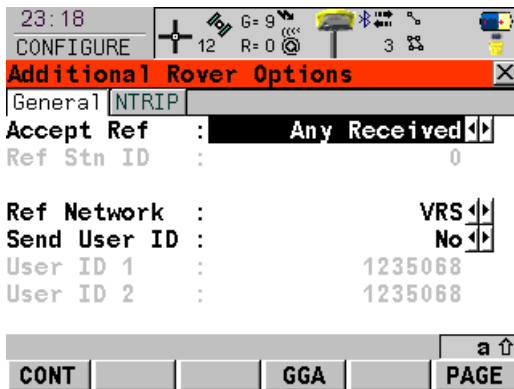
Select "Rover" (F2)



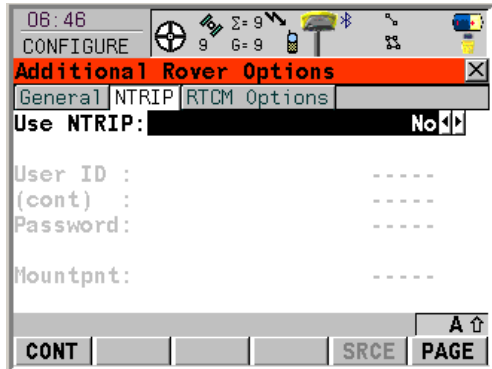
Accept Ref: Any Received  
 Select the type of reference. e.g. Ref Network: VRS  
 Select "GGA" (F4)



"GGA Position: Automatic"  
 Select "Cont" (F1)

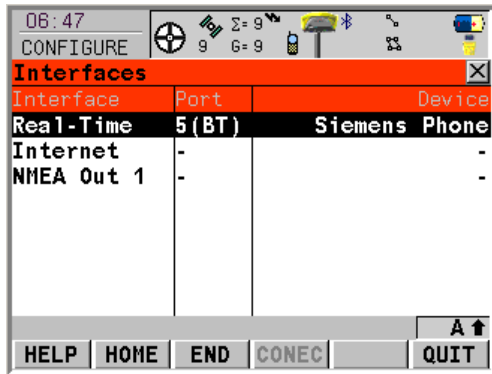


Select NTRIP page (F6)



Use NTRIP: No

### Connect and Disconnect



Select "Shift Connect" (F4)

Or setup USER menu and select USER key