

# GeoMax Zenith30 GNSS – Installation and Configuration

## Introduction

The Geomax ZGP800A antenna can be connected to a PC such as the Zenith30, to perform GNSS measurements. To operate this system, the Geomax Simulation software and 768007 USB protection key is needed. This document describes how to setup these components of the Zenith30.



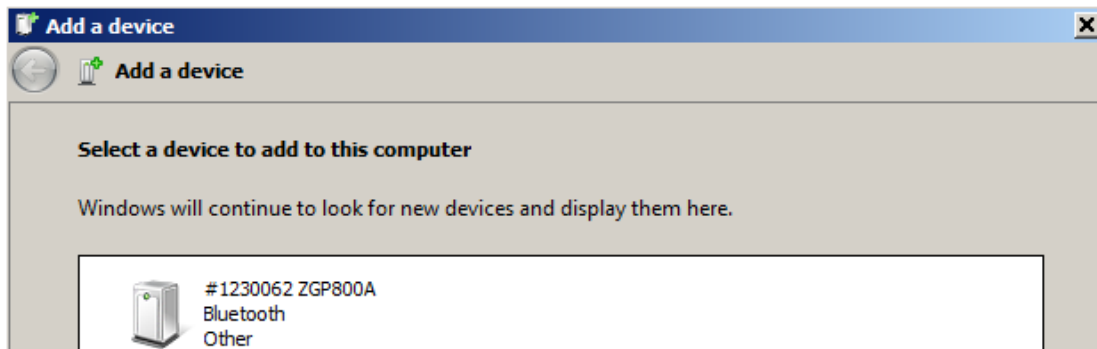
## Connecting the Antenna

Insert a battery into the Geomax ZGP800A antenna and power on. Using Microsoft Windows 7, establish a Bluetooth connection to the antenna with the following procedure:

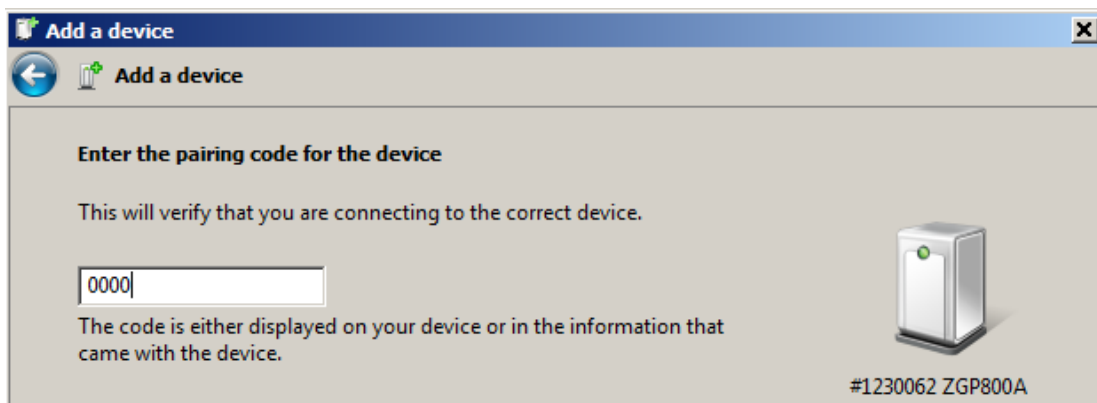
- With Windows Control Panel, select Devices and Printers:  
**Control Panel\All Control Panel Items\Devices and Printers**

- Click on **Add a device**

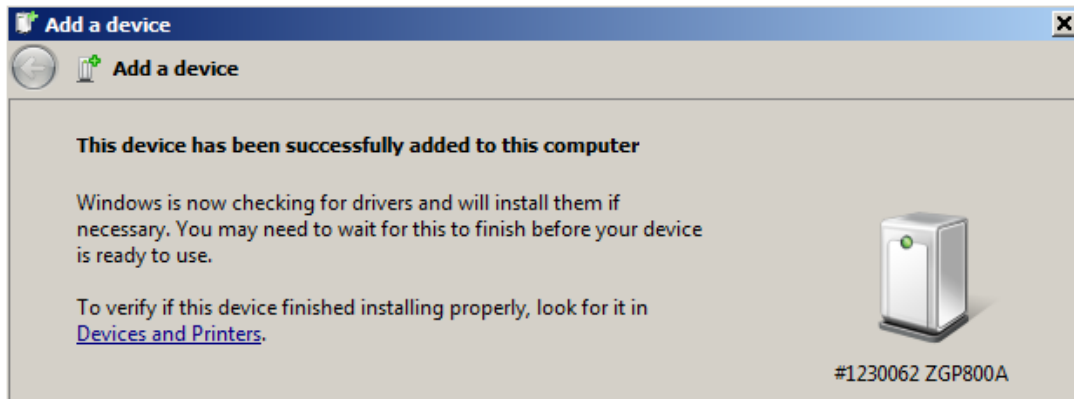
All available Bluetooth devices are shown. Select the ZGP800A with the required serial number.



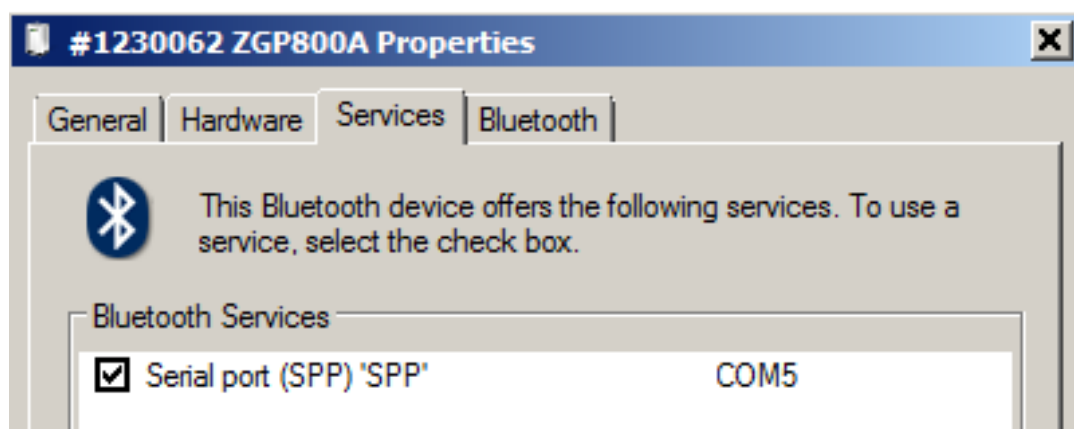
- At the pairing code request, enter **0000**



- The necessary drivers are installed automatically and the device is added

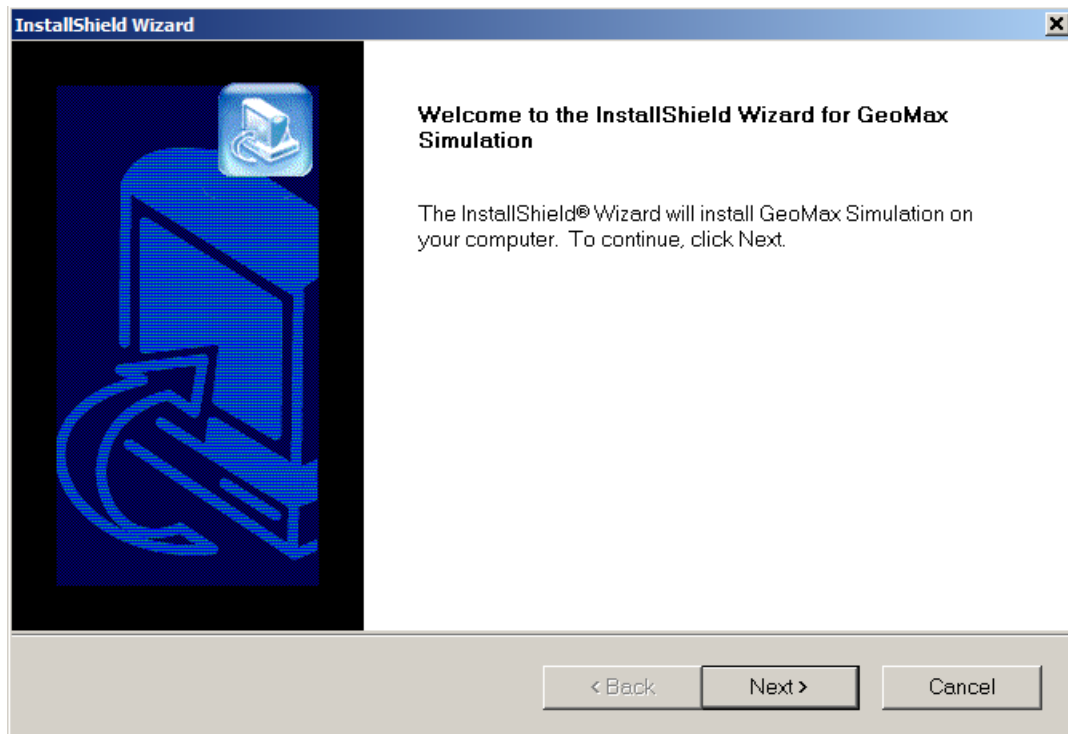


- Right-click on the ZGP800A device and select **Properties**. Note the assigned COM port.



## Installing the Simulation

- Copy the Geomax Simulation files from the ZGP800 Series CD onto a USB memory stick.
- Plug in the USB stick into the PC and install the Geomax Simulation by running the Setup Application. Follow the installation wizard instructions.

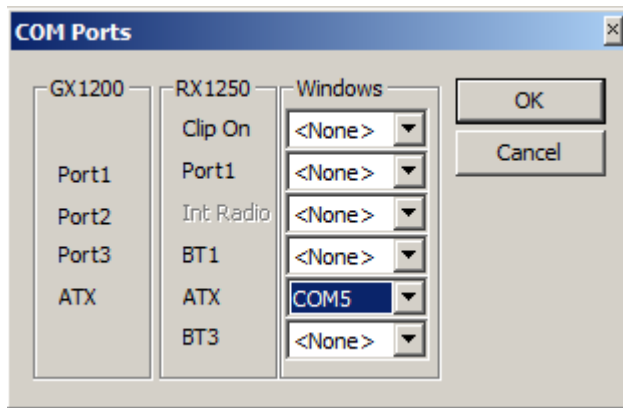


- Plug-in the USB Geomax software protection key into a port on the PC. If not available, the protection key can be ordered using Article Number 785706.

- Start the Simulation from the desktop icon

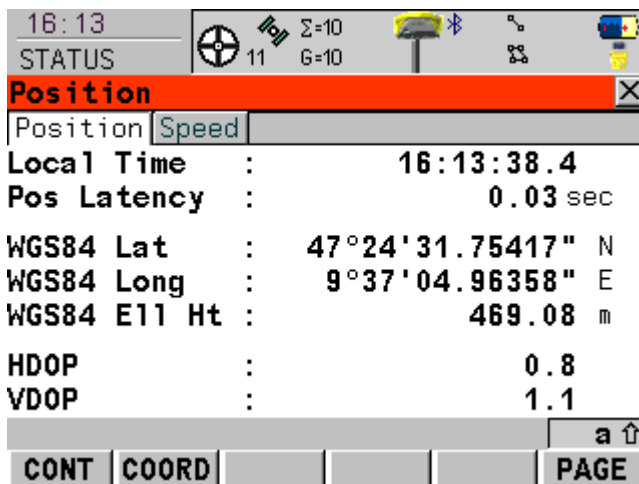


- From the Simulation menu select **Configuration → COM ports...**  
At the ATX field, set the COM port that Windows assigned as the ZGP800 Bluetooth connection.



- From the Simulation menu select **File → Switch On**

- When the Simulation starts, the Bluetooth light on the antenna should turn-on and satellite information is transferred to the PC.



- To change to a local language, select **5.Config, 3.General Config, 3.Lang.**

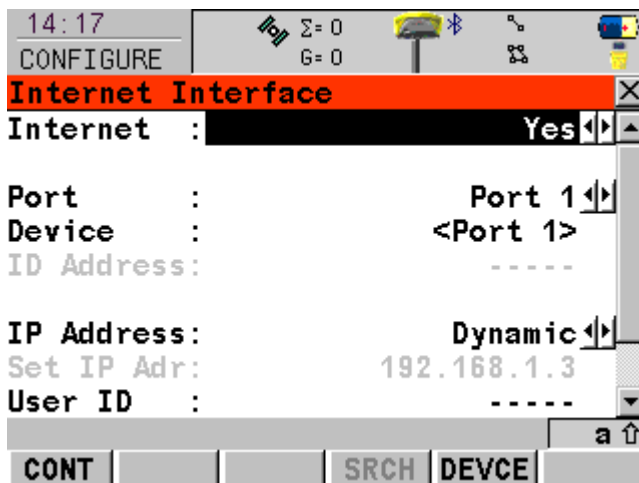
- The software protection key can now be removed and GNSS measurements made.

## Configuring for NTRIP connection

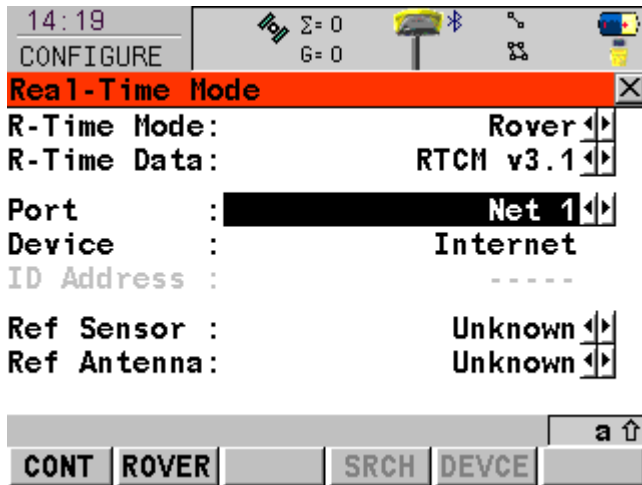
- Establish an internet connection by using the Windows application OneClick. Run the application and press the Connect button.



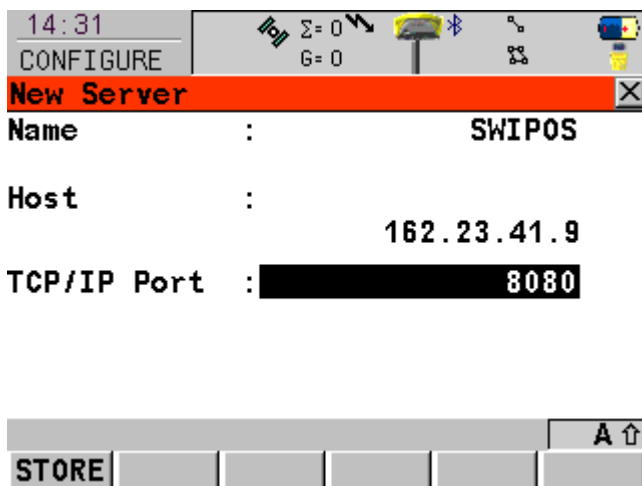
- On the Geomax Simulation, select 4.Comm Configuration. At the Internet Interface panel, set the port to "Port 1" and the device to "<Port 1>".



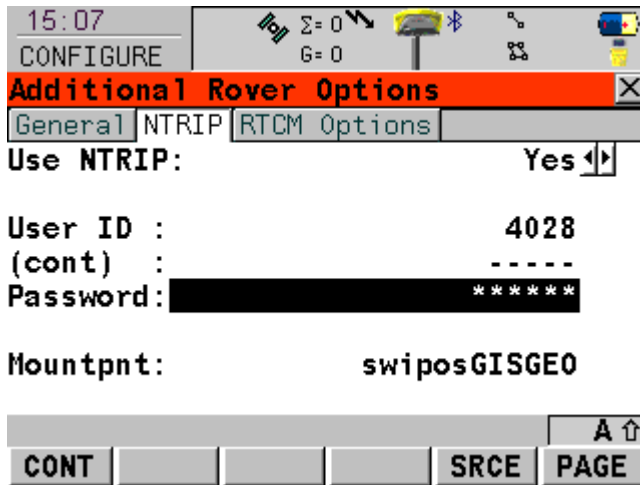
- At the Real-Time Mode panel, set the mode to "Rover" and the port to "Net 1". Select the RTK data type that is suitable to the local reference network. Press CONT to return to the Interfaces panel.



- With Real-Time highlighted, press F4-CTRL. Enter the IP address and Port of the Reference Network Server.



- Return to the Real-Time Mode panel and press F2-ROVER. Set NTRIP to Yes and enter the reference network assigned User ID and password. By pressing F5-SRCE, the local mount point must be chosen.



- A connection can now be made to the network either in an application or from the Configure Interfaces panel with Shift-F4-CONEC.

